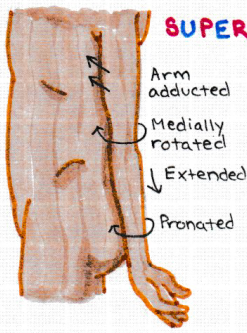


BRACHIAL PLEXUS AND BEYOND

@ariella.studies

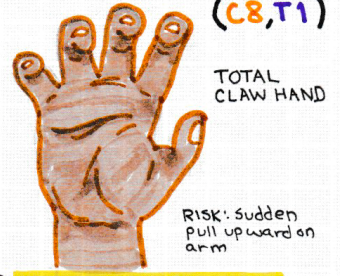


SUPERIOR TRUNK LESION (C5,C6)

ERB PALSYP aka **WAITER'S TIP**

Infant Risk { lateral traction on neck during delivery

INFERIOR TRUNK (C8,T1)



KLUMPKE PALSYP

LONG THORACIC NERVE

(C5,C6,C7) stab wound serratus anterior surgery

WINGED SCAPULA

+ cannot abduct arm above horizontal position

ULNAR NERVE

(C8, T1)

DISTAL LESION

fractured hook of Hamate (e.g. fall on outstretched hand)



"ULNAR CLAW"

+interossei (ab/adduction of fingers) and adductor pollicis

PROXIMAL LESION

fracture of medial epicondyle of humerus ("funny bone")



MEDIAN NERVE

(C5 - T1)

PROXIMAL LESION

supra condylar fracture of humerus



"POPE'S BLESSING"

RECURRENT BRANCH thenar eminence

DISTAL LESION

carpal tunnel of wrist laceration



"MEDIAN CLAW"

superficial palm laceration

"APE HAND" unopposable thumb

CORDS

DIVISIONS

TRUNKS

ROOTS

AXILLARY NERVE

(C5, C6)

fractured surgical neck of humerus anterior dislocation of humerus

• flattened deltoid • loss of arm abduction @ shoulder

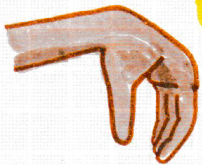
LIMIT 15°

RADIAL NERVE

(C5 - T1)

poorly fitted crutch compresses axilla midshaft humerus fracture

"SATURDAY NIGHT PALSYP"



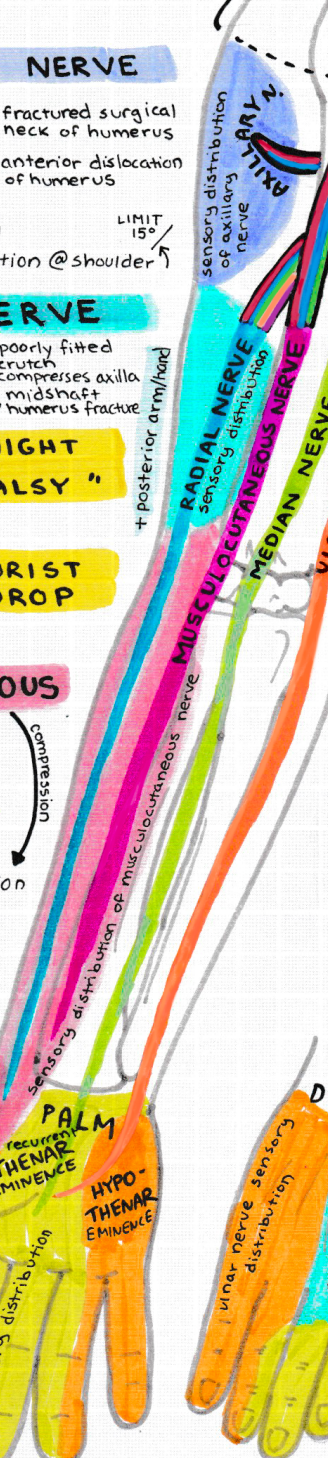
WRIST DROP

MUSCULOCUTANEOUS

(C5, C6, C7)

Biceps brachii, coracobrachialis, brachialis

• loss of elbow flexion • loss of forearm supination



PALM

recurrent thenar eminence

more radial nerve

median nerve

sensory distribution

HYPO-THENAR EMINENCE

DORSUM

ulnar nerve sensory distribution

more radial nerve sensory distribution

sensory distribution

(cc) 2019 Ariella Coler-Reilly

Created with reference to:
First Aid by Tao Le et al. (2018 Edition),
Essential Clinical Anatomy by Keith Moore et al.,
and Washington University School of Medicine,
especially Dr. Amy Bauernfeind and Dr. Kari Allen,
Course Masters for WUSM Anatomy

Please share freely with your students, classmates, or anyone else who may benefit. I will be glad if you let me know, but it is not required. Do not modify, such as removing my name, and redistribute. Do not use for commercial purposes.

@ariellastudies
@ariella.studies

